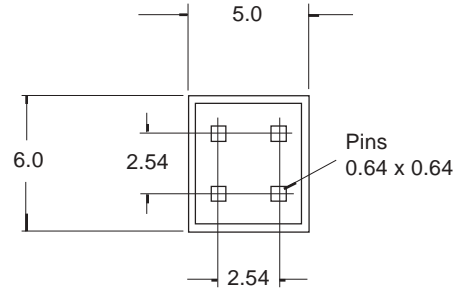
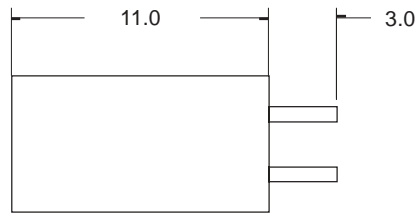


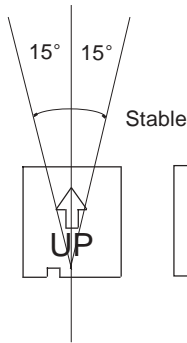
PRODUCT DATA SHEET

Tilt Switch

RBS 040100

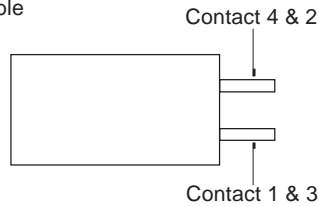


Keep switch upright
for contact stability

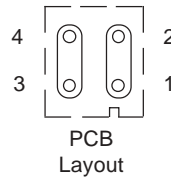


Stability

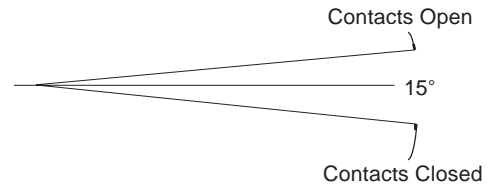
Stable



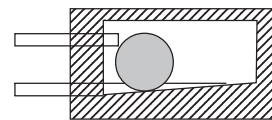
Suggested pcb layout



PCB
Layout



Contacts Closed

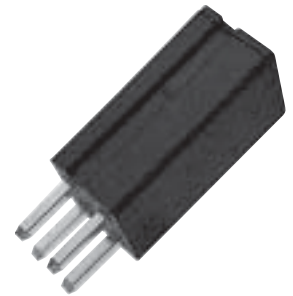


Operation

Drawings not to scale
All dimensions in mm nominal

SPECIFICATION

CONTACT RATING		25mA at 24 Vdc
CONTACT RESISTANCE	Ohms	10
DIFFERENTIAL ANGLE	Deg.	15 from horizontal
OPERATING TEMPERATURE	Deg. °C	-25 +70
CONTACTS		Gold Plated
CASE MATERIAL		Polyamide - UL94V-0
FEATURES		Non-Mercury Contacts



Designed to trigger an I.C., these switches offer a low cost solution to detecting tilt or tipover movement. Suitable for alarm and non-hazardous applications.

All switches have gold plated ball and gold plated terminals for improved life and stability. Alternative part number M1230-1.

Rev. No.	Revision Note	Date
B	Web Site 2003	1-5-03

As part of the company policy of continued product improvement, specifications may change without notice. Our sales office will be pleased to help you with the latest information on this product range and details of our full design and manufacturing service. All products are supplied to our standard conditions of sale otherwise agreed in writing.



©2003
Active Switch & Sensor Limited